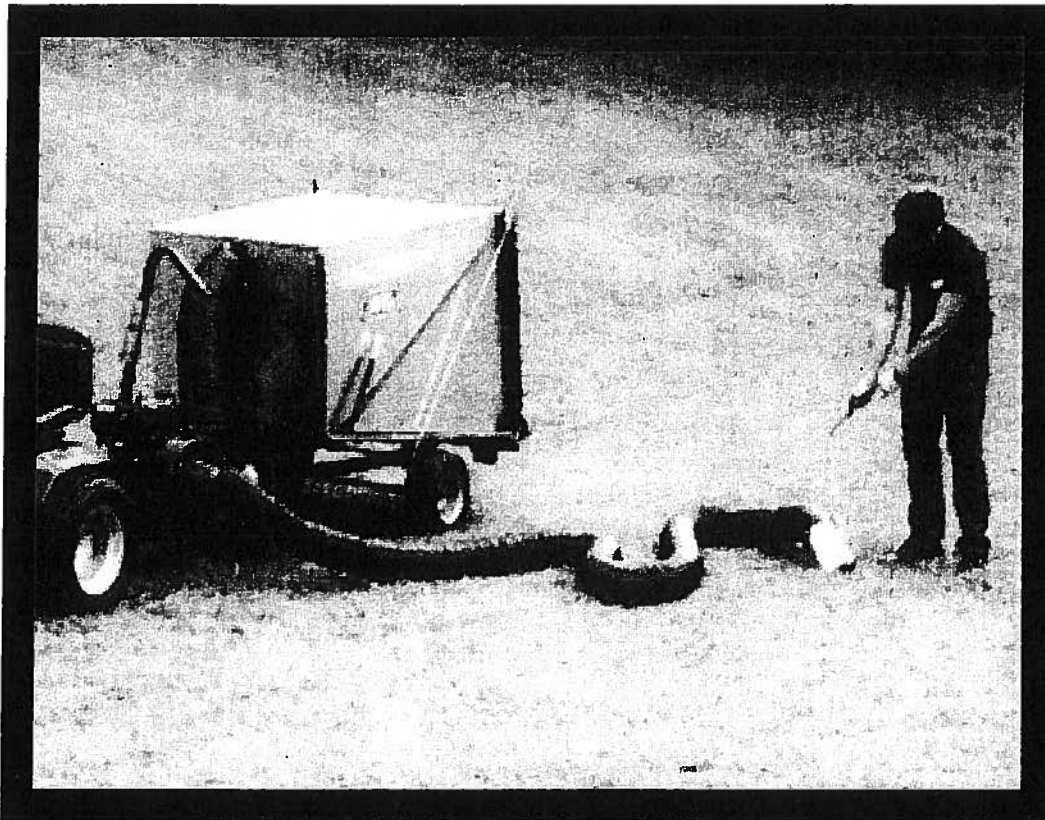


MODEL 8050-02 & 10850-02



PECO OWNERS MANUAL

FOR A 50 CUBIC FOOT PASTURE VAC UNIT



CONGRATULATIONS AND THANK YOU FOR BUYING THIS PECO LAWN VACUUM.

Your new PECO Vac has been engineered and manufactured to PECO's high standards for safety, quality, dependability, and ease of operations.

SAVE THIS MANUAL FOR FUTURE REFERENCE

PeCo Limited Warranty for New Products

A. WHAT IS WARRANTED?

PeCo extends the following warranties to the original purchaser of each new PeCo consumer product subject to the following limitations.

1. PRODUCT WARRANTY.

Any part of any consumer product, which is defective in material or workmanship as delivered to the purchaser will be repaired or replaced, as PeCo elects, without charge for parts or labor, if the defect appears within 12 months from the date of delivery of the product to the original purchaser. **ALL DEFECTIVE PARTS MUST BE RETURNED TO PeCo FOR INSPECTION TO DETERMINE VALIDITY OF WARRANTY CLAIMS.** Freight and mailing charges will be borne by the customer.

2. PARTS REPLACED DURING WARRANTY.

Any new PeCo part which is furnished in performance of this warranty and is defective in material or workmanship as delivered to the purchaser will be repaired or replaced, as PeCo elects, without charge if the defect appears within 90 days from the date of installation of such part or before the expiration of the original warranty period, whichever is later.

B. SECURING WARRANTY ADJUSTMENTS

Damaged or broken parts other than engines or batteries, must be returned to PeCo, Inc., P.O. Box 1197, Arden, NC 28704 before any warranty adjustment can be authorized. At the time of requesting warranty adjustment, the purchaser must present evidence of the date of delivery of the product. The purchaser shall pay any charge for transporting the product to and from Arden, NC.

C. ITEMS NOT COVERED BY PeCo WARRANTY.

Engines and batteries attached to PeCo products are covered under a separate warranty by the respective manufacturer.

D. UNAPPROVED ALTERATION OR MODIFICATION.

All obligations of PeCo, Inc. under this warranty shall be terminated if products are altered or modified in ways not approved by PeCo, Inc.

E. ACCIDENTS AND NORMAL MAINTENANCE.

The warranty covers only defective material and workmanship. It does not cover depreciation or damage caused by normal wear, accident, improper use or abuse of products. The cost of normal maintenance and normal replacement of service items such as belts, cutting blades, hoses, etc., which are not defective shall be paid for by the purchaser.

F. NO REPRESENTATIONS ADDITIONAL WARRANTIES, DISCLAIMER.

Neither PeCo, Inc. nor any company affiliated with it makes any warranties, representations or promises as to the quality of performance of its products other than those set forth herein. Except as described above, PeCo, Inc. makes no other warranties **AND SPECIFICALLY DISCLAIMS ANY AND ALL IMPLIED WARRANTIES OF FITNESS AND MERCHANTABILITY.**

G. ANY MACHINE USED FOR RENTAL OR COMMERCIAL PURPOSES ARE GUARANTEED FOR 45 DAYS FROM DATE OF ORIGINAL SALE ONLY.

H. REMEDIED EXCLUSIVE.

The only remedies the purchaser has in connection with the breach or performance of any warranty on PeCo, Inc. consumer products are set forth above. In no event will PeCo be liable for special incidental or consequential damages.

I. NO SERVICE CENTER WARRANTY.

The selling Service Center makes no warranty on his own on any item warranted by PeCo, Inc. unless he delivers to purchaser a separate written warranty certificate specifically warranting the item. The dealer has no authority to make any representation or promise on behalf of PeCo or to modify the terms of limitations of this warranty in any way.

Outdoor Power Equipment Institute Recommendations

WARNING TO PURCHASERS OF INTERNAL COMBUSTION ENGINE EQUIPPED MACHINERY OR DEVICES IN THE STATE OF CALIFORNIA:

The equipment which you have purchased does not have a spark arrester muffler. If this equipment is to be used on any forest covered and brush covered land or grass covered unimproved land in the state of California, the law requires that a spark arrester muffler be installed and be in effective working order. The spark arrester must be attached to the exhaust system and comply with Section 4442 of the California Public Resources Code.

1. Read the owner's manual carefully and familiarize yourself with the proper use of your attachment. Do not allow anyone who is not acquainted with the Safety Instructions to use your attachment.
2. Know the controls and how to stop quickly. **READ THE OWNER'S MANUAL!**
3. Do not allow children to operate the vehicle. Do not allow adults to operate it without proper instruction.
4. Be especially watchful of children and pets darting into the area while operating.
5. Keep your eyes and mind on your tractor while mowing or operating your attachment. Don't let others distract you.
6. Do not attempt to operate your tractor or mower when not in the driver's seat.
7. Always stop Vac engine when emptying the container.
8. Stop tractor and vac engines and remove spark plug wire before removing or replacing hose, boot, blower cone or performing any maintenance.
9. Mow up and down the face of slopes (not steeper than 10 degrees); never across the face of the slope.
10. It is recommended that the container be kept only half full when negotiating any slopes. Start mowing on slopes when the container is empty.
11. Inspect your lawn and remove any foreign objects before mowing. Never deliberately run mower across any foreign object.
12. Wear ear protection if noise level is offensive.

WARNING!

NEVER operate the mower unless the discharge guard and either the deflector assembly or the vacuum collector adapter are fastened securely in place.

WARNING!

To avoid serious injury, perform maintenance on the vacuum collector **ONLY AFTER STOPPING THE TRACTOR ENGINE AND WAITING FOR ALL MOVING PARTS TO COME TO A COMPLETE STOP.** Set the parking brake. Always remove the ignition key before beginning the maintenance

WARNING!

Do not work around the mower deck boot or the blower area until you are certain that the mower blades and the blower fan have stopped rotating.

WARNING!

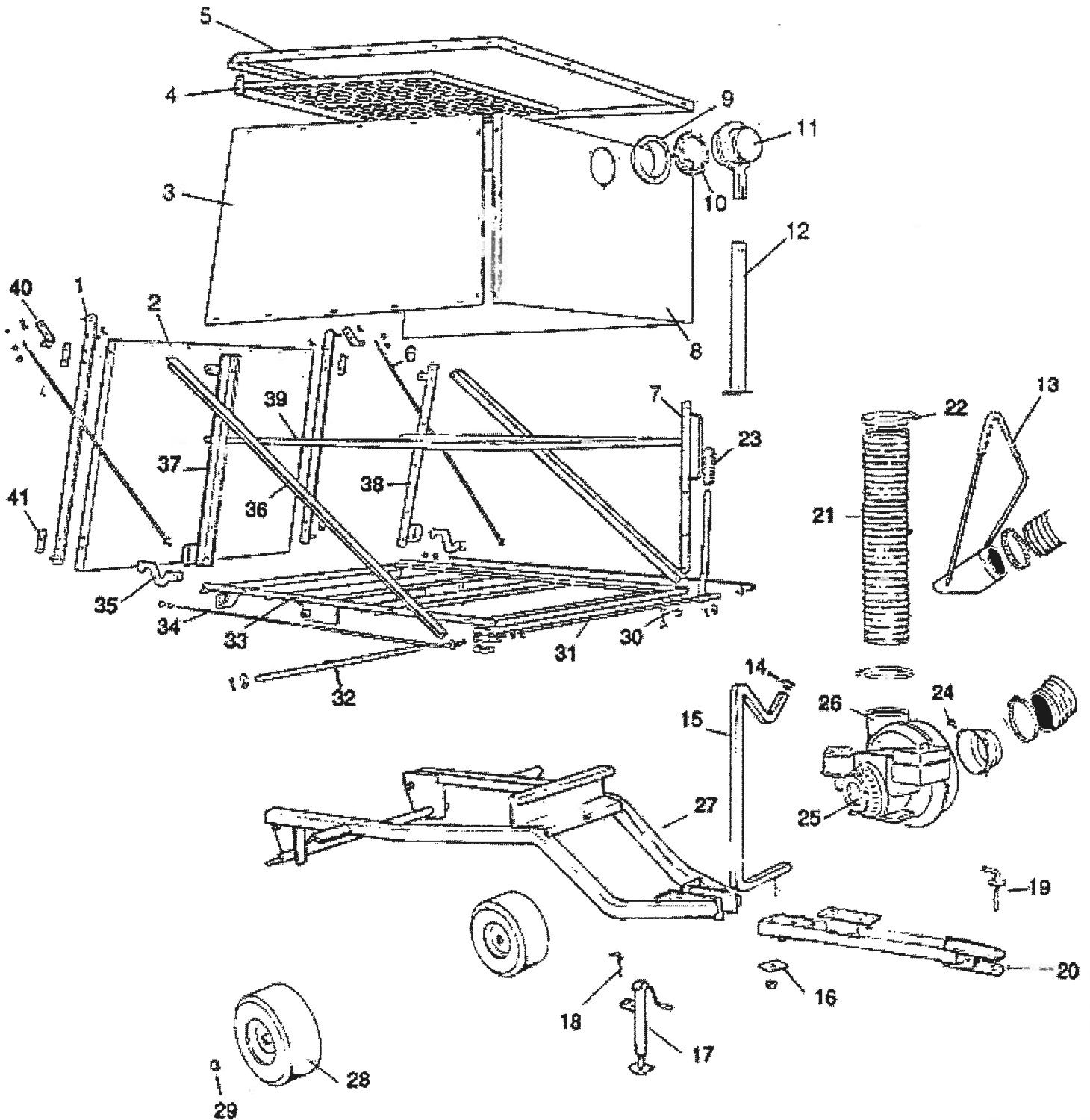
For your personal safety, **ALWAYS** mow **UP** and **DOWN** the face of slopes and **NEVER** across the face. **NEVER** attempt to mow excessively steep slopes and use caution when turning on any slope.

PARTS LIST



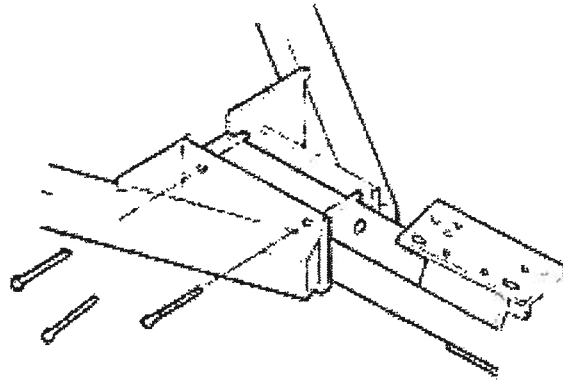
| REF. NO. | PART NO. | DESCRIPTION | QTY. |
|----------|-------------------|----------------------------------|------|
| 01 | A0338 | DOOR RAIL ASSEMBLY | 2 |
| 02 | A0952 | DOOR ASSEMBLY | 1 |
| 03 | C1189 | SIDE PANELS | 2 |
| 04 | A0956 | SCREEN FRAME ASSEMBLY | 1 |
| 05 | C1190 | BOX TOP | 1 |
| 06 | A0341 | PIVOT ROD ASSEMBLIES | 2 |
| 07 | A0372 | DUMP HANDLE | 1 |
| 08 | C1191 | BOX FRONT PANEL | 1 |
| 09 | E8004 | INLET RING | 1 |
| 10 | J0527 | 3/4" "D" INLET SEAL | 1 |
| 11 | A0958 | INLET ASSEMBLY | 1 |
| 12 | A1684 | UPRIGHT ASSEMBLY | 1 |
| 13 | 6569 | WAND KIT | 1 |
| | A0350 | WAND KIT ASSEMBLY | |
| | J6011 | 6" HOSE CLAMP | |
| | F1012 | 6" x 18' SUPER FLEX HOSE | |
| | E6005 | 6" BLOWER CONE | |
| 14 | J0518 | HOSE HANGER CAP | 1 |
| 15 | A0088 | HOSE HANGER | 1 |
| 16 | B0102 was (B1373) | PINCH PLATE | 1 |
| 17 | A0322 | JACK STAND | 1 |
| | A0099 | (OPTIONAL) JACK STAND WITH WHEEL | 1 |
| 18 | A0312 | JACK PIN | 1 |
| 19 | A0342 | HITCH PIN ASSEMBLY | 1 |
| 20 | A0128 | TONGUE ASSEMBLY | 1 |
| 21 | F2009 | 7" x 42" UPPER FLEX HOSE | 1 |
| 22 | J6006 | 7" HOSE CLAMPS | 2 |
| 23 | J0522 | HANDLE GRIP | 1 |
| 24 | K2145 | CONE BOLTS | 2 |
| 25 | D5004 | 8HP GAS ENGINE (8050) | 1 |
| | OR | | |
| | D9001 | 6HP DIESEL ENGINE (10850) | 1 |
| 26 | E5007A | BLOWER HOUSING | 1 |
| | A0644 | IMPELLER | 1 |
| 27 | A0395 | BASE FRAME ASSEMBLY | 1 |
| 28 | H1011 | PNEUMATIC WHEELS | 2 |
| 29 | K1046 | 7/8"-14 NYLOC NUTS | 2 |
| 30 | C7001 | LATCH BEARING BLOCKS | 4 |
| 31 | A0467 | LATCH ROD ASSEMBLIES | 2 |
| 32 | B4225 | PIVOT | 1 |
| 33 | A0040 | TILT BASE FRAME ASSEMBLY | 1 |
| 34 | A0365 | DOOR PIVOT ROD | 1 |
| 35 | B1418 | LATCH HOOKS | 2 |
| 36 | B5277 | DIAGONAL RAILS | 2 |
| 37 | A0051 | VERTICAL RAIL ASSEMBLY (RIGHT) | 1 |
| 38 | A0050 | VERTICAL RAIL ASSEMBLY (LEFT) | 1 |
| 39 | C1188 | BOX BOTTOM | 1 |
| 40 | B2268 | PIVOT ROD STRAP | 2 |
| 41 | B2377 | DOOR RAIL BACKER PLATES | 4 |

PARTS DIAGRAM



STEP 1:

Slide the engine mount arm assembly into the tongue of the base frame. Line up the holes and secure with (3) 3/8"-16 x 2-1/4" hex bolts & (3) flange nuts.

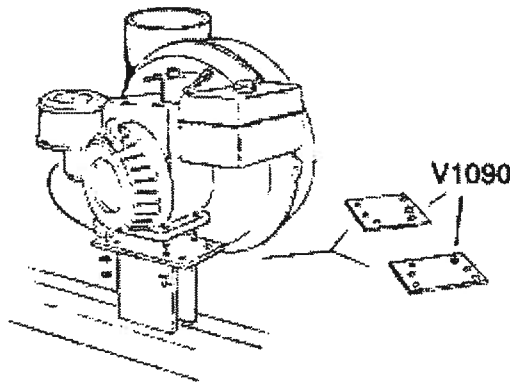


STEP 2:

Before mounting the engine place the rubber shock absorbers (PN#V1090) onto the engine mount plate and align the holes. (The rubber shock absorbers should be sandwiched between the mount plate and the base of the engine.) Place the engine on the mount plate with the negative (Black) cable between the engine and the plate. Secure the engine with (4) 5/16"-18 x 2" & (4) 5/16"-18 flange nuts. For the diesel engine use (4) 3/8"-16 x 2" hex bolts and (4) 3/8"-16 flange nuts.

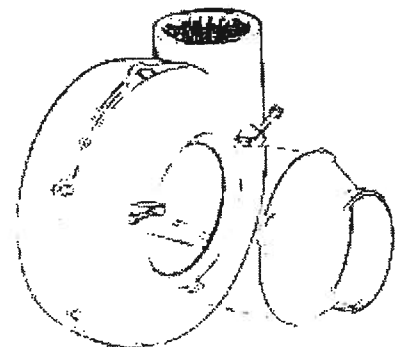
Note: Route the positive (+) cable over top of the engine and blower housing.

Warning: Disconnect power from battery when working on engines!!!



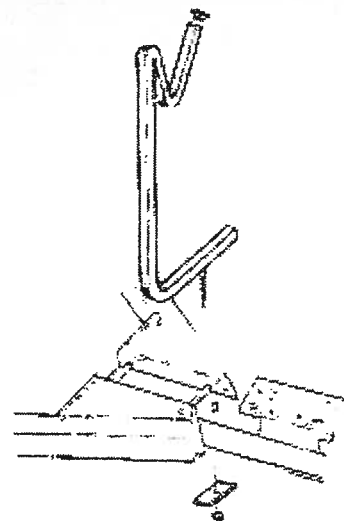
STEP 3:

Attach the blower cone to the blower housing. Position the cone so that the bottom edge rests on the raised tab at the front of the blower. Secure with (2) 5/16"-18 x 2" all thread hex bolts.



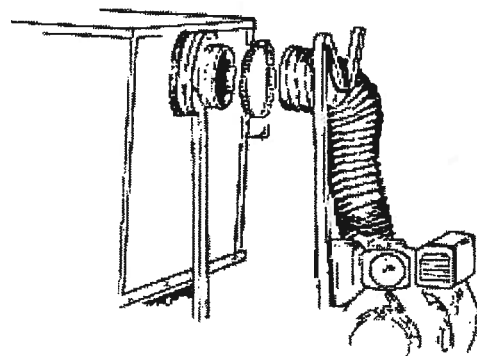
STEP 4:

To mount the hose hanger, slide the threaded bolt through the hole at the rear of the engine mount arm. Slide the pinch plate over the bottom of the bolt stud and secure with a 1/2"-13 flange nut. Place the plastic plug into the upper end of the hanger, a small amount of adhesive may be required.



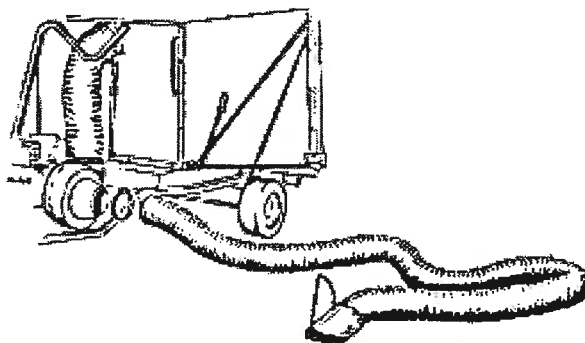
STEP 5:

Place a hose clamp over each end of the 7" upper flex hose. Attach one end to the top of the blower housing. Slide the other end over the inlet ring. Tighten the hose clamps.



STEP 6:

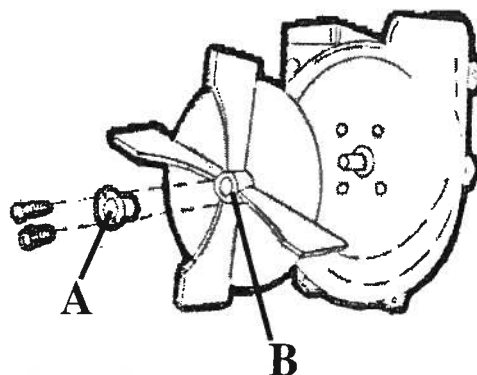
Place a hose clamp over each end of the 18 foot flex hose. Connect one end to the blower cone. Slide the free end over the flat end of the wand attachment. Tighten the hose clamps.



IMPELLER BLADE REPLACEMENT

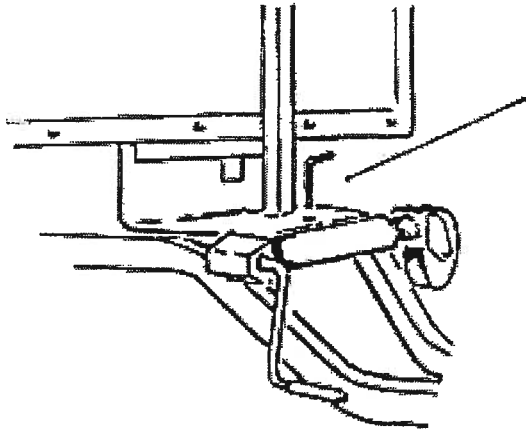
TO REMOVE: First remove hex bolts from hub, then screw the bolts into threaded holes to remove old blade. (This will push impeller off the hub.) If the impeller will not move, hit the base of the impeller between each vein with a hammer, then try again.

TO REPLACE: Place tapered bushing (A) into hub (B) and align non-threaded holes in hub. Secure with (2) 1/4" x 1" hex bolts. Torque to 15 ft. lbs.



JACK STAND

Your Pasture-Vac is equipped with either the standard flat plate or a (optional) caster mounted jack stand.



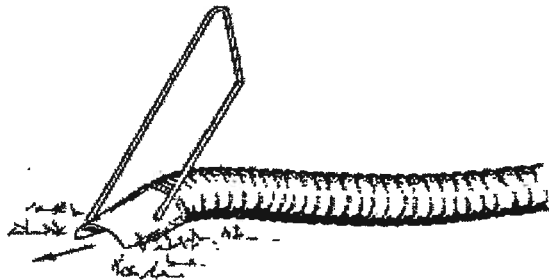
Pull the locking pin out, and remove the Jack Stand.

Rotate 90° and re-insert pin.



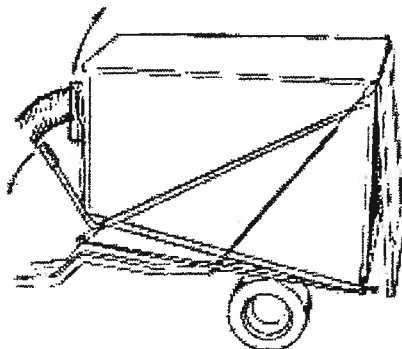
WAND

When using the wand attachment operate the engine at full throttle. Hold the wand so that the beveled bottom edge is parallel to the ground as it is pushed forward in a scoping motion. Once you become familiar with the use of the wand, move its foam pad to a position that best suits your grip. Then fasten with a small dab of adhesive.



DUMPING

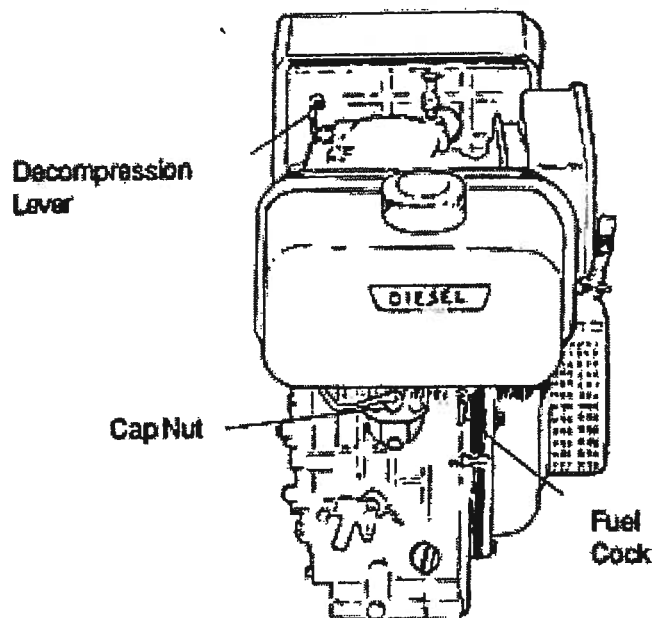
Before emptying the Pasture-Vac shut off the engine. Push forward and down on the dump handle and allow the trailer to tip back. Debris should slide freely from the tapered box. Return the box to its horizontal position and relatch by pulling up on the dump handle.



BLEEDING THE FUEL LINES (DIESEL ONLY)

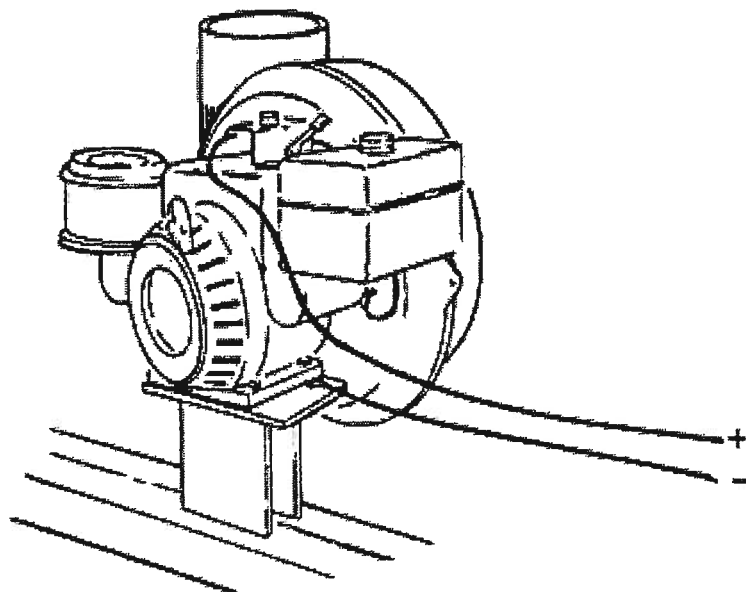
Air can enter the fuel system when the engine is first installed, or when the fuel line is removed. To remove the air, bleed the system according to the following instructions.

- *Place the regulator in the normal position.
- *Open the fuel cock.
- *Open the decompression lever.
- * Loosen the cap nut (fuel injection valve side) of the high pressure fuel pipe. Make sure fuel comes out from the cap nut while pulling the recoil starter, then tighten the cap nut.



WIRING INSTRUCTIONS

- * Locate the large red wire lead attached to the engine panel's push start switch.
- * Connect the wire to the towing vehicle's Positive battery terminal.
- *Locate the large black wire lead grounded to the engine mounting plate and connect the other end to the negative battery terminal.





Your PeCO Lawn Vac was designed and built to provide years of service with only minor care. Certain tasks however must be performed to keep it in good operating condition and to avoid costly repairs. This section describes and provides procedures for the necessary care of the Lawn Vac.

| SCHEDULED CARE | CARE REQUIRED |
|-----------------|--|
| Before Each Use | Check engine oil. Check all hose connections. |
| After Each Use | Clean Collector Box, hoses and engine of all grass and dirt. |
| Every 10 Hours | Check to be sure all screws, nuts, bolts, pins, etc. are present and secure. |

Storage

Never store your PeCo Lawn Vac with a full or partially filled container; decaying grass and leaves may constitute a fire hazard if left too long. Never leave your vac exposed to the elements. While the metal parts are protected with a quality paint, the engine and other unprotected parts may deteriorate if left exposed to rain or snow.

Emptying The Lawn Vac

When the container becomes full, the blower tone will change. In order to empty the container - Release the back door by moving the dump handle on the left hand side of the container. Release the door, push back on the container and the debris falls out. When empty, pull the box forward; move the dump handle in to properly close the rear door.

Service

PeCo Lawn Vac Owners should record the name and telephone number of their Service Center. Your Service Center will be happy to supply replacement parts, and accessories as well as preform necessary service or repairs to your lawn vac. If for some reason your Service Center is unable to service your lawn vac or supply replacement parts, contact PeCo and include the following information:

| | |
|--|-------------------------|
| Tractor Model: _____ | Year of Mfg. _____ |
| Deck Size: _____ | |
| PeCo Vac Model: <u>8050-02 or 10850-02</u> | |
| Serial Number: _____ | |
| Date of Purchase: ____ / ____ / ____ | |
| Service Center's Name: _____ | |
| Service Center's City: _____ | State: _____ Zip: _____ |
| Service Center's Phone Number: _____ | |

Diagnostic Procedures

Trouble shooting procedures are provided in the chart below. To use these procedures, first locate the problem below that best describes the trouble you have encountered. Check the possible causes in the list one at a time. Correct any problems that are found and operate the vacuum collector again to verify that you have eliminated the problem.

DO NOT attempt any major repairs without first contacting your dealer.

| PROBLEM | CAUSE | SOLUTION |
|---|---|---|
| Leaves and Grass not being picked up completely | <ol style="list-style-type: none">1. Engine speed too slow2. Ground speed too fast3. Hose plugged | <ol style="list-style-type: none">A. Run at full throttle.B. Use lower gear.C. Check and tighten all hoses.D. Unplug hose. |
| Hoses plug easily | <ol style="list-style-type: none">1. Grass or leaves too wet2. Grass too high3. Container full4. Grass buildup in boot or under mower deck | <ol style="list-style-type: none">A. Wait for drier conditions.B. Reduce ground speed/raise deck.C. Empty container.D. Clean thoroughly. |
| Vacuum Collector blower vibrates excessively | <ol style="list-style-type: none">1. Buildup on blower blades2. Bent or chipped blade | <ol style="list-style-type: none">A. Remove cone and clean blades.B. Contact your dealer or PeCo. |
| Unit fails to fill box | <ol style="list-style-type: none">1. Engine speed too slow.2. Buildup on inlet or screen3. Grass is too wet or long | <ol style="list-style-type: none">A. Run at full throttle.B. Clean thoroughly.C. Wait for dryer conditions. |

The Serial Number Plate is located on the aluminum box near the dump handle.

OUTDOOR POWER EQUIPMENT

Model Number

Serial Number

Arden, North Carolina 28704



**P.O BOX 1197
ARDEN, NORTH CAROLINA 28704
1-800-438-5823 OR (828) 684-1234 FAX-(828) 684-0858
E-MAIL: PECOINC1@BELLSOUTH.NET**